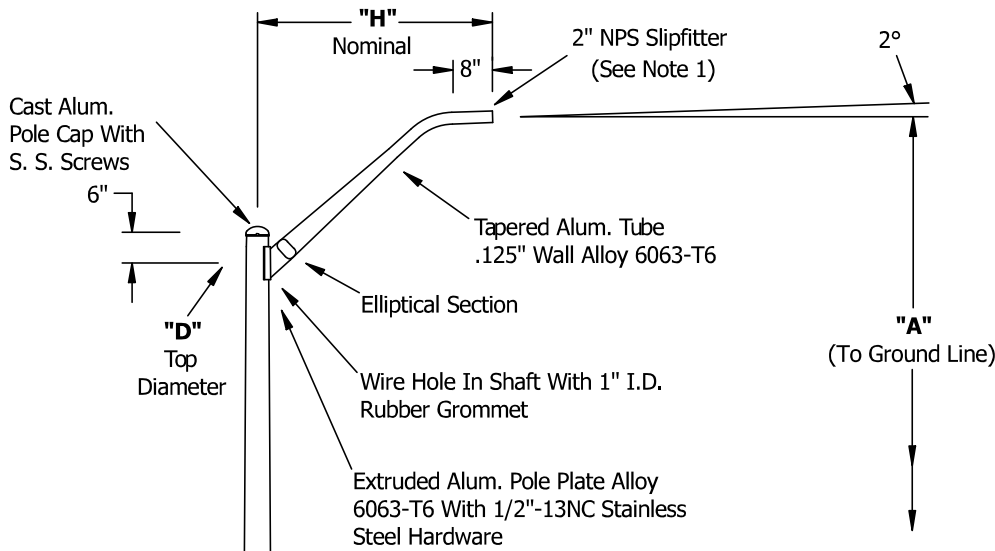


20 Foot Street Light Pole with 4 Foot Mast Arm and 6 Inch Bottom Diameter .156 Inch Wall Thickness - Part #: 20A6RT1561M4



"B" Wall Alloy 6063-T6
Satin Ground or Powder Coated Finish
per Customer Specification

Grounding Provision Opposite Handhole
For 6" OD Poles And Handhole
Frame Tapped 3/8"-16NC For
Grounding For All Others

"C" Butt Diameter

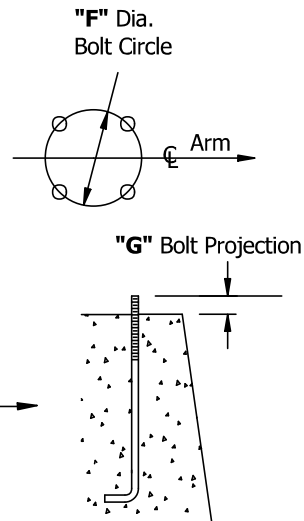
Base Flange Alloy 356-T6 With
Bolt Covers And Stainless Stl.
Hex. Hd. Screws

1'-6"

"E" Sq.

(4) Galv. Stl. Anchor Bolts,
AASHTO M314-90 Grade 55, 10" Of
Threaded End Galv. Per ASTM A153
With (4) Galv. Stl. Hex. Nuts, Lock-
washers And Flatwashers

A	Mounting Height:	20 ft	Maximum EPA
B	Wall Thickness:	.156 in	70 MPH: 8.0
C	Butt Diameter:	6 in	80 MPH: 7.8
D	Top Diameter:	4.5 in	90 MPH: 5.8
E	Base Diameter:	9.75 in	100 MPH: 4.3
F	Bolt Circle:	9-10 in	110 MPH: 3.2
G	Bolt Projection:	2.75 in	
	Bolt Size:	1 x 36 x 4	
	Net Weight:	80	
	Luminary Weight:	80	
H	Arm Length:	4	



Notes:

- (1) Brackets Supplied With 2" NPS Slipfitter.
Specify Modification 140 For 1.25" NPS Slipfitter.