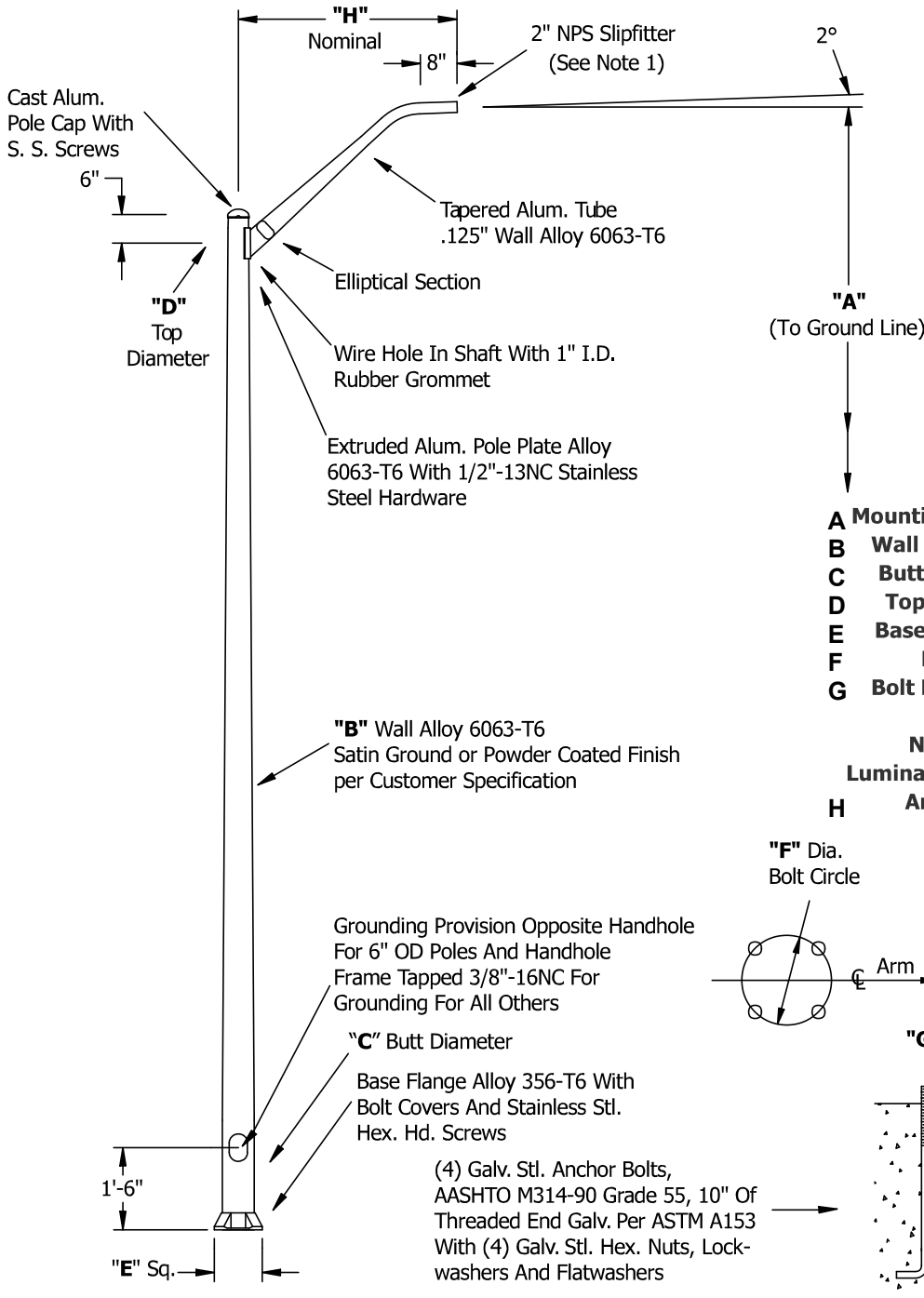
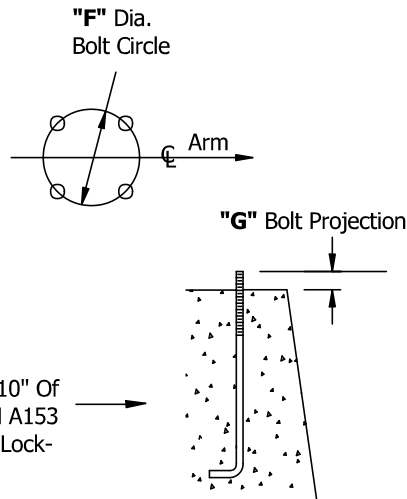


# 25 Foot Street Light Pole with 6 Foot Mast Arm and 7 Inch Bottom Diameter .188 Inch Wall Thickness - Part #: 25A7RT1881M6



<b>A</b>	<b>Mounting Height:</b>	25 ft	<b>Maximum EPA</b>
<b>B</b>	<b>Wall Thickness:</b>	.188 in	<b>70 MPH:</b> 8.0
<b>C</b>	<b>Butt Diameter:</b>	7 in	<b>80 MPH:</b> 6.5
<b>D</b>	<b>Top Diameter:</b>	4.5 in	<b>90 MPH:</b> 4.5
<b>E</b>	<b>Base Diameter:</b>	10.5 in	<b>100 MPH:</b> 2.6
<b>F</b>	<b>Bolt Circle:</b>	10-11 in	<b>110 MPH:</b> 1.4
<b>G</b>	<b>Bolt Projection:</b>	2.75 in	
	<b>Bolt Size:</b>	1 x 36 x 4	
	<b>Net Weight:</b>	125	
	<b>Luminary Weight:</b>	69	
<b>H</b>	<b>Arm Length:</b>	6	



**Notes:**

- (1) Brackets Supplied With 2" NPS Slipfitter.  
Specify Modification 140 For 1.25" NPS Slipfitter.