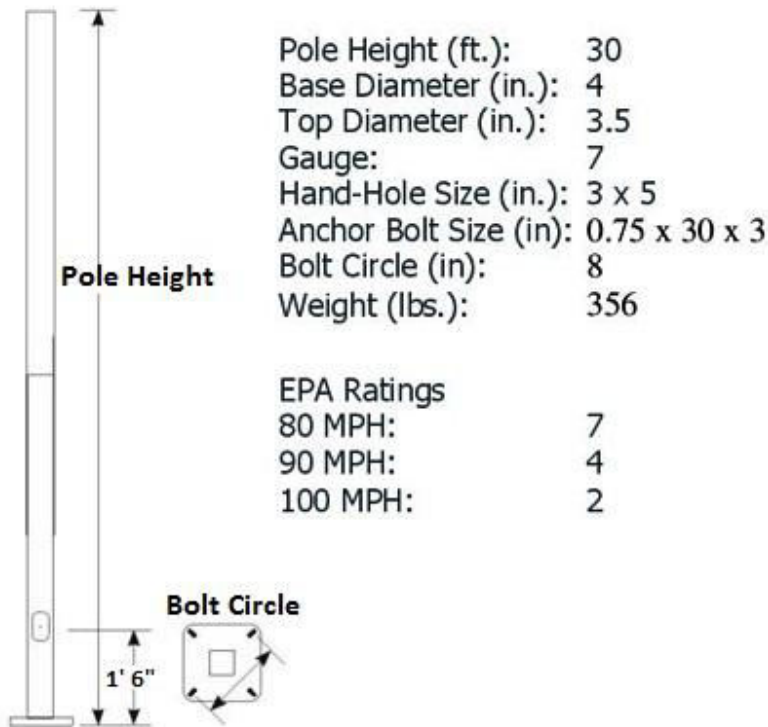


# 30 FOOT 4 INCH HINGED STEEL LIGHT POLE - 30S4STH188

4 Inch Base with 7 Gauge Wall Thickness



## Pole Shaft

The pole shaft is made of hot rolled commercial quality carbon steel with a guaranteed minimum yield strength of 50,000 psi after fabrication. Each section is one-piece construction with a full length longitudinal weld and is square in cross-section with a uniform taper of 0.1 inches of diameter change per foot of length.

## Hinge

This light pole has a sturdy, industrial-grade hinge mechanism installed in the mid portion of the shaft. The hinge is operated with an optional portable winch. One portable winch can be used for multiple poles eliminating the need to order a winch for every pole.

## Base Plate

The anchor base is fabricated from structural quality hot rolled carbon steel plate that meets or exceeds a minimum yield strength of 36,000 psi. The anchor base covers the bottom portion of the pole shaft and is circumferentially welded at the top and bottom. All welds are performed in accordance with the American Welding Society specification AWS D1.1, latest edition.

## Handhole

An oval reinforced gasketed handhole having a nominal 3 in. x 5 in. inside opening located 18 inches above the base is standard on all poles. Optional 5 in. x 8 in. and 4 in. x 10 in. hand-holes are available. A grounding provision is located inside the hand-hole ring.

## Anchor Bolts

Anchor bolts are fabricated from commercial quality hot rolled carbon steel bar that meets or exceeds a minimum yield strength of 55,000 psi. Four properly sized anchor bolts, each with two regular hex nuts and washers are furnished and shipped with all poles unless otherwise specified. Anchor bolts have the threaded end galvanized a minimum of 8 inches in accordance with ASTM A-153.

## Finish

All exterior metal surfaces are mechanically cleaned to remove all oxides and contaminants prior to coating. The standard finish is a polyester thermosetting powder coat applied to the surface of the substrate to a minimum of 3 mils for all color finishes. Galvanizing is available upon request.